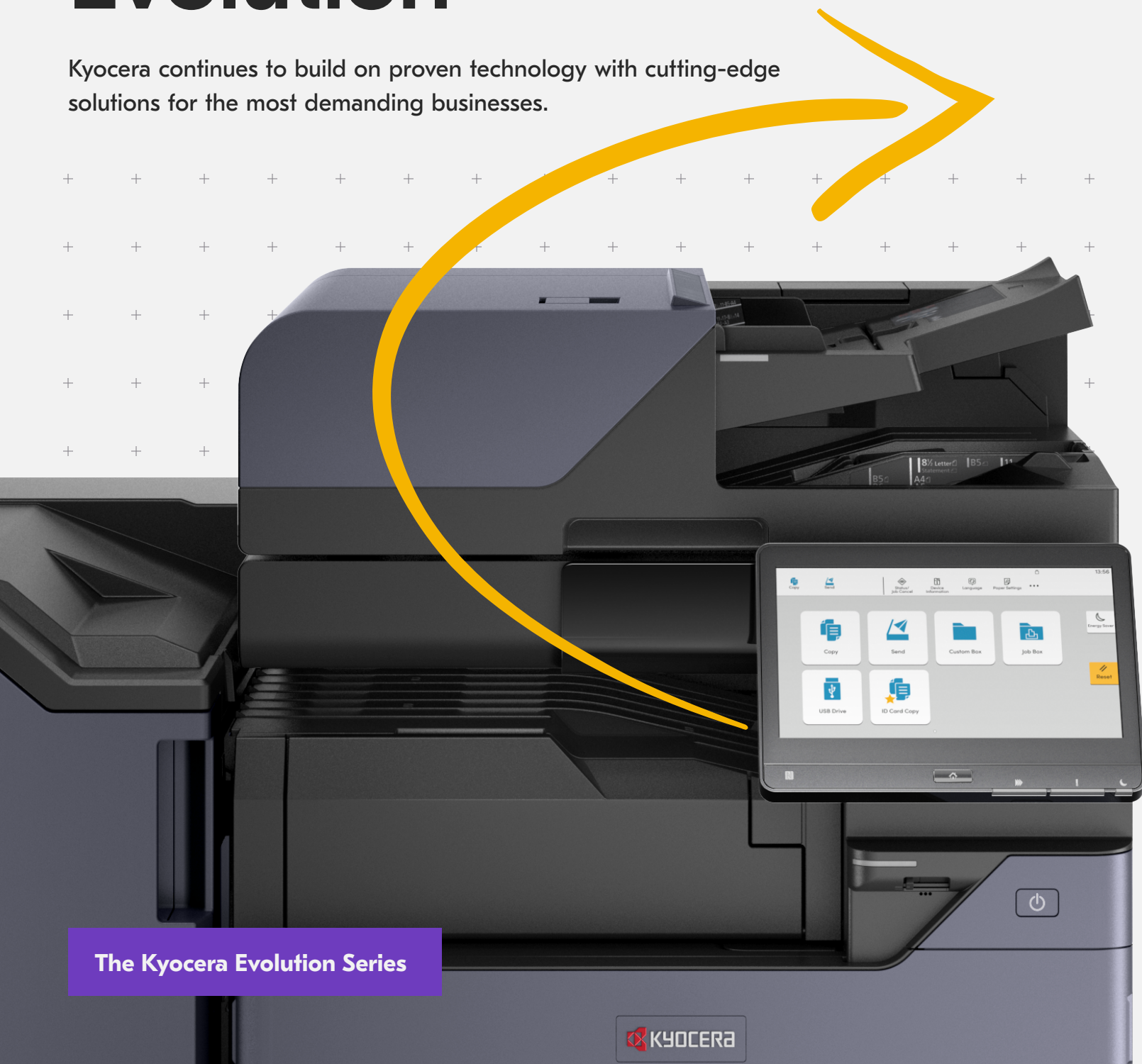


Next-level of Evolution

Kyocera continues to build on proven technology with cutting-edge solutions for the most demanding businesses.



The Kyocera Evolution Series

Table of Contents



Get Ahead. Stay Ahead.	04
Building Resilience	05
A Blueprint for Success	06
Raising the Stakes	07
Your Data Under Lock and Key	08
Time to Aim High	10
Investing Today, Thriving Tomorrow	13



“During this period of change, flexible and reliable tools will be crucial to business success.”





Get Ahead. Stay Ahead.

Change is no longer the exception — it's now the norm. Given the scale of disruption all around us, change is one of the few things we can actually be certain of.

While it can be all too easy to resort to survival mode, the digital era will reward those who favor proactiveness over reactivity. The business landscape is awash with new risks and challenges and savvy leaders understand that now is the time to invest and innovate, rather than opting for the "ride out the storm" approach.



The vast majority of business leaders accept the need to invest in new technologies to remain competitive.

Many business leaders across all industries — from healthcare and education to construction and legal services — are realizing that the tools that serve us well today will not suffice tomorrow. New challenges demand new solutions and approaches.

At Kyocera, we take pride in our ability to deliver solutions that help our customers grow their business. We are digital transformation partners.

Nonetheless, we continue to strive for excellence every single day. We continue to evolve.

Perfection is a process, not a destination, and the Kyocera Evolution Series is a testament to this. We innovate today so we that our cutting edge innovations can help our customers get ahead — and stay ahead — tomorrow and beyond.

Building Resilience

The key to building smart enterprises that can better withstand and embrace change will be through **exceptional technology**.

Online and offline interactions can no longer be viewed as separate entities. Successful companies will be those who are able to weave both together in order to satisfy changing customer attitudes, tastes, and behaviors. This will be the key to creating personalized customer experiences.

Customers demand for better quality and a new, more flexible approach to work has put the focus on businesses to supply their staff with the resources they need to collaborate and work together.

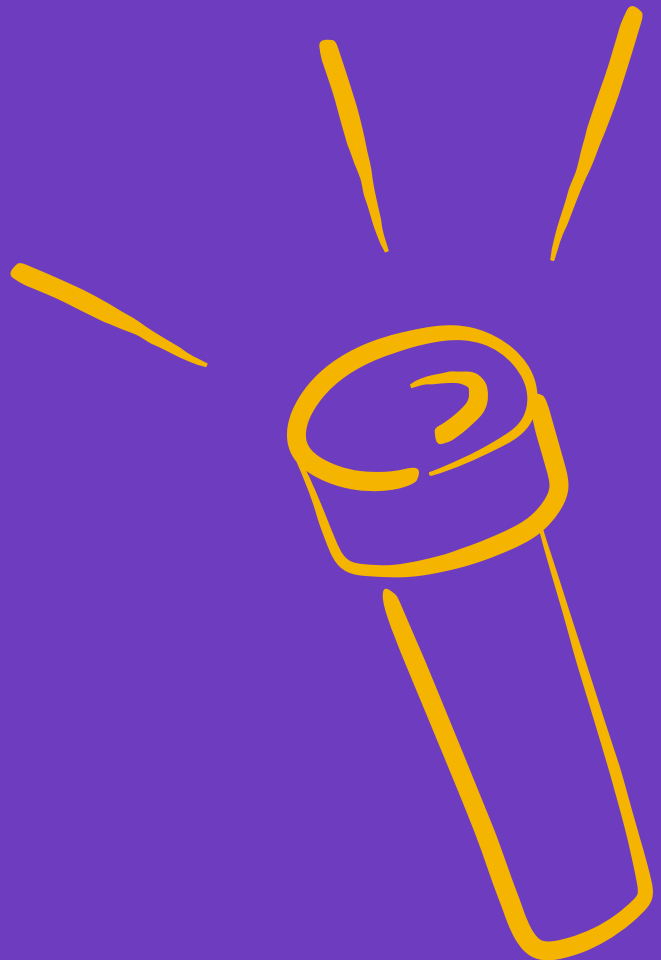
While companies across all sectors find themselves at different stages of the digital transformation, many of the traditional document solutions headaches facing key decision makers still persist: **device downtime, cost control, quality, security and usability**. It is little wonder then why many organizations are looking to significantly increase their investment in technology.

Industry experts anticipate spending levels in Information and Communications Technology (ICT) to increase dramatically in the next five years as the importance and availability of new technologies continue to grow.

By working hand in hand with our customers and experts in the field, Kyocera has set about to address these age-old pains, while giving users the optimal platform to quicken the pace of their digital acceleration.

They say you shouldn't change a winning formula. We believe that there is always room for improvement. The Kyocera Evolution Series is testament to this. We have taken a series of classic black & white and colour devices and added a modern twist to meet the needs of today's demanding workspaces.

Data — and how it is gathered, used, shared, and protected — will separate the good from the great in the digital age.





A Blueprint for Success

The versatile tablet-like interface provides a more engaging experience.

The new Kyocera Evolution Series boasts a robust and versatile lineup of A3 MFPs that have been built to last. Combining cutting edge technology and Kyocera's vast expertise, the new additions represent the latest instalment of upgrades to hugely-popular Kyocera legacy devices.

The game-changing series began with the launch of the TASKalfa 3554ci and TASKalfa 2554ci, and this was quickly followed by a further eight upgraded TASKalfa devices. Equally divided between the newly-branded Kyocera Evolution BW Series and the Kyocera Evolution Colour Series, the new-look devices add new value to workflows by focusing on four key areas:

Usability: Equipped with a 10.1-inch display, the Kyocera Evolution Series includes an intuitive and easy-to-use, full-color User Interface, while offering fast and simple access to a wide range of document management functions, including HyPAS applications. To further boost efficiency, hardware keys are minimized, and users enjoy a seamless transition between the User Interfaces while using the tablet-like display.

Productivity: The Evolution Series bring greatly improved optional high-speed document processors to the table. Pairing this with scan speeds of up to 274 images per minute, we get a highly productive MFP ready to transform the way your organization works. The Evolution Series is an industry pioneer in staple detection, and it's ultrasonic multiple paper feed detection feature (only supported with the DP-7170) ensures that no scanned pages are missed.

Reliability: The new Evolution Series incorporates Kyocera's renowned long-life technology that is built to last the test of time. Reduced downtime not only keeps your workflow running smoothly, but it also saves businesses vast sums of money in the long-run. And that's before we mention reduced stress and frustration levels!

Security: The increased number of remote devices connecting to shared databases has seen the volume of cybersecurity threats soar. The Evolution Series comes ready with brand-new security certificates, encryption, and device activity tracking capabilities to protect the safety and integrity of confidential business data.

Raising The Stakes

The Kyocera Evolution Series.

Outstanding performance + **Unbeatable reliability** = **The complete A3 MFP**



Optimal output: 320 sheet capacity, up to 70ppm printing and 274 ipm scanning ensuring outstanding productivity.



Professional quality: Consistent, outstanding quality without fail – print after print.



Built to last: Long-life technology makes for devices that stand the test of time.



Industry-leading security: Rest assured knowing that your valuable data is protected.



A professional touch: New finishing capabilities include Z-Fold Finishing and Inserter Unit, available for the 60/70ppm models.



Energy-efficient: New toner design and low power mode help keep energy bills under control.



Your Data Under Lock and Key

New security threats demand solutions that are up to the task.

The digital age and the rise of hybrid working caused the number and complexity of cybersecurity threats to increase exponentially — we see it every day on the news.

There are more remote devices connecting to shared databases and more emails containing confidential

information being sent and received than ever before. Today's businesses need help from dedicated experts.

It's clear that the new Kyocera Evolution Series has arrived when its needed most.

Security risks to your business right now:



Devices

Unauthorized remote devices can, if undetected, cause severe data breaches.



Email

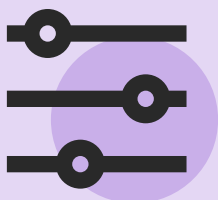
Highly valuable data is vulnerable to attack if not properly encrypted.



Security certificates

Expired certificates can leave businesses exposed to a cyberattack.

With the Kyocera Evolution Series your business gets a robust and proactive solution to data security.



Activity control

The security log management function (SIEM) enables a central point of information monitoring. The audit log records user-specific data relating to print jobs and devices before transmitting this data to the external server. This technology enables these new devices to quickly flag suspicious or unusual behavior while notifying the administrator.



Email encryption

Secure/Multipurpose Internet Mail Extensions (S/MIME) is a technology that allows users to encrypt and digitally sign their emails. If a user certificate and an intermediate certificate have been imported into a KYOCERA device, a message sent from the device can be encrypted with the user's public key. If the message is digitally signed, the recipient will know that the message is both authentic and unaltered.



Certificate authentication

The Kyocera Evolution Series enables users to retrieve certificates from the Certification Authority (CA) automatically. This process has been simplified and now requires minimal effort and input from administrators. Meanwhile, these systems are certified with ISO 15408, FIPS 140-2 and HCD-PP international security standards that ensure optimal data protection.



Finish with A Flourish

One size no longer fits all. With the Kyocera Evolution Series, it's your documents your way. By giving you full control over the end product, it has never been easier to add a new dimension to your books, marketing materials and brochures. Moreover, the Evolution Series brings brand-new finishing capabilities to the table for 60/70ppm devices so you can quickly and easily carry out the jobs you need — without the stress.



ZF-7100 Z-Fold Option

This functionality enables you to add “z-folded” sheets into your documents. This includes applications like diagrams, charts and other larger sheets that need to be folded into a 8.5” x 11” sized booklets. This can also be particularly useful for standalone jobs when producing invoices, marketing flyers and brochures.

IS-7100 Inserter Unit Option

This feature comes in the form of two trays that enable users to feed pre-printed pages as potential front or back covers or potential sheet inserts. The Inserter Unit means that these pre-printed sheets don't have to go through the high-temperature fusing process at the MFP, thus ensuring that the pre-printed sheets won't get destroyed or melted.

Staple Finishing Option

Beyond these outstanding new features, the Kyocera Evolution Series also boasts 4,000 sheet staple finisher options that support 65 and 100 sheet stapling and 2/3 hole-punching for clean, professional looking output so that more jobs can be kept in-house.

With the Evolution Series, Kyocera has gone that extra mile to give customers much more control over the quality and final appearance of their output even in the most demanding of work environments.

Your Documents Like Never Before

**The Kyocera Evolution Colour Series: Unrivalled image quality.
Same Kyocera reliability.**



Here are just some of the benefits of the Kyocera Evolution Series:



High performance

Fast print and scan speeds for maximum efficiency.



Durability

Our devices have earned industry recognition for their reliability.



Paper capacity

Less time filling paper trays means more time for quality work.



Proven quality

New toner technology provides excellent image quality and stability.



Go paperless

Digitally transform your workflow with higher capacity feeding and faster scan speeds of up to 274 ipm.



Professional output

Do more jobs "in-house" with the new Z-Fold and Inserter options for the 60/70ppm systems.

The Evolution Continues



Investing Today, Thriving Tomorrow



They say you shouldn't change a winning formula. At Kyocera, we believe that there is always room for improvement. The Kyocera Evolution Series is testament to this. We have taken classic monochrome and colour devices and added a modern twist to meet the needs of today's demanding workspaces.

The Kyocera Evolution Series mark a **new chapter** in printing. These new devices combine Kyocera's unrivalled know-how with the company's unwavering commitment to innovation.

The benefits of the Kyocera Evolution Series extend well beyond the physical output. These devices have the capabilities to become a fundamental part of your entire digital transformation strategy.



Productivity

ASIC Chip technology improves productivity by 25% when printing PDF files, while staple detection and ultrasonic multiple paper feed detection features ensure minimal downtime (multiple paper feed detection is only offered on the DP-7170).



Technology

Kyocera's scalable intelligent technology gives you the power to produce professional images without the hassle. Meanwhile, Kyocera Fleet Services effectively maximize the uptime of your fleet.



Security

Your valuable data deserves the best protection. We've added a host of security enhancements including meeting international security certification standards to ensure that your customer's device, data and network always have the best protection available.



Usability

With the new series you get an engaging tablet-like display that combines a simple, slick and fresh design with intuitive and efficient operations for an unbeatable user experience. No more stress. No more frustration.

The digital age promises to reward businesses that proactively invest in new technologies, rather than reacting to circumstances — very often, by then, it's too late to catch up.

Now is the time to face this period of disruption on the front foot and on your terms.

Get ready.

The Evolution has only just begun.

Kyocera Document Solutions has championed innovative technology since 1934. We enable our customers to turn information into knowledge, excel at learning and surpass others. With professional expertise and a culture of empathetic partnership, we help organizations put knowledge to work to drive change.

KYOCERA Document Solutions Canada, Ltd.
6120 Kestrel Road, Mississauga, ON L5T 1S8, Canada
Tel: 905-670-4425



kyoceradocumentsolutions.ca